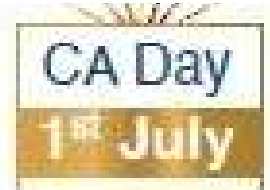




**THE INSTITUTE OF CHARTERED
ACCOUNTANTS OF INDIA**
(Set up by an Act of Parliament)



MADURAI BRANCH(SIRC)
JULY MONTH
NEWSLETTER



TRUST | TRANSPARENCY | TECHNOLOGY

CHAIRMAN'S MESSAGE



CA JAYAKRITHIKA R
CHAIRMAN
2024 - 2025

Dear Esteemed Members,

As we welcome the month of July, it brings me great pleasure to reflect this month as the Season of Growth and Learning.

Our continued commitment to excellence and innovation in the field of accountancy has once again been affirmed through various successful events, workshops, and seminars. I extend my heartfelt gratitude to all the members who actively participated and contributed to these initiatives.

Looking ahead, I am excited to announce several upcoming initiatives designed to further enhance our professional skills and knowledge base.

As we move forward, let us remain dedicated to our core values of integrity, transparency, and professional excellence. Together, we can overcome any challenges and seize the opportunities that lie ahead.

Wishing you all a productive and prosperous month ahead.

Warm regards,
CA.Jayakrithika
Chairman
MBSIRC of ICAI

GALLERY

One Day Seminar on AI

01/06/2024

**CA Dayaniwas Sharma ,CA Narasimhan E ,
CA Subhachandran M**



Residential Refresher Course at Kumarakom

07/05/2024 to 08/05/2024



Two Day National Workshop

14/06/2024 to 15/06/2024



Yoga Day -21/06/2024



FAFD Course - 22/06/2024 to 13/07/2024



CPE Meeting - 22/06/2024



CPE Meeting - 29/06/2024



Outer Games @ Madura College

29/06/2024



Indoor Games @ ICAI Bhawan

30/06/2024



EXCEL TIPS



CA DUNGAR CHAND U JAIN

PAST CHAIRMAN SIRC OF ICAI

Formula Auditing

Formula auditing is an essential tool in Excel helps us show the relationship between formulas and cells. This feature is instrumental in identifying errors, tracing dependencies, and ensuring the accuracy and reliability of data.

Formula Auditing in MS Excel contains a set of tools that allow users to inspect formulas, trace precedents and dependents, monitor cell relationships, and detect errors. These tools are accessible through the "Formulas" tab under the "Formula Auditing" group.

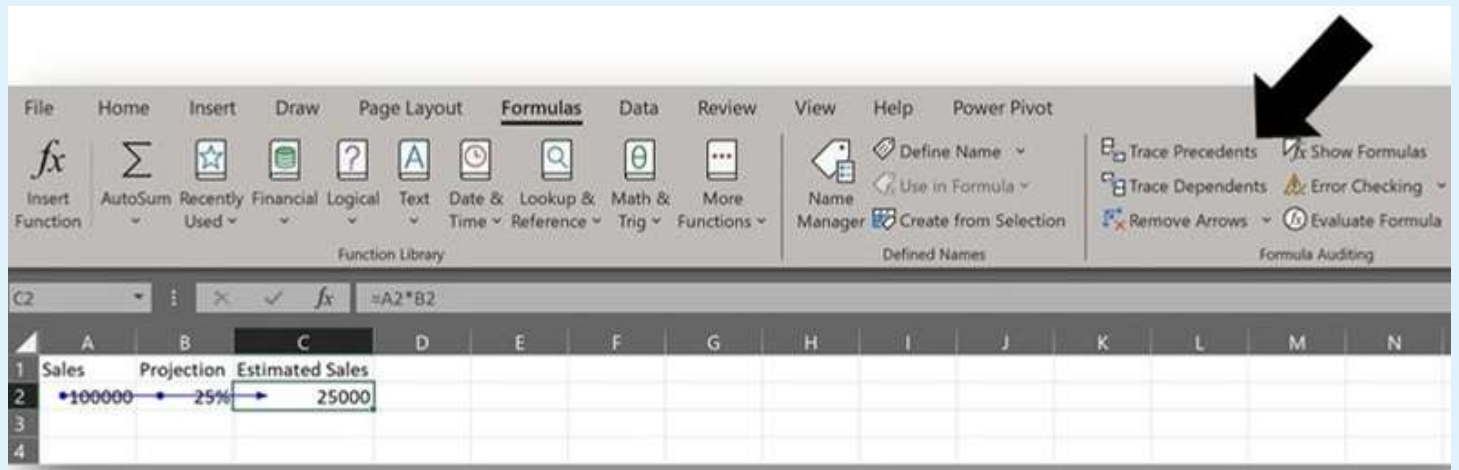
Following are the different ways using which you can audit a formula:

- 1. Trace Precedents**
- 2. Trace Dependents**
- 3. Remove Arrows**
- 4. Show Formulas**
- 5. Error Checking**

1. Trace Precedents

Trace Precedents displays tracer arrows from the cells showing the direction of information flow. You see a blue box around the cells when this method is active. However, one can press this button multiple times to catch additional levels.

Following are the steps to use Trace Precedents in your Excel worksheet:

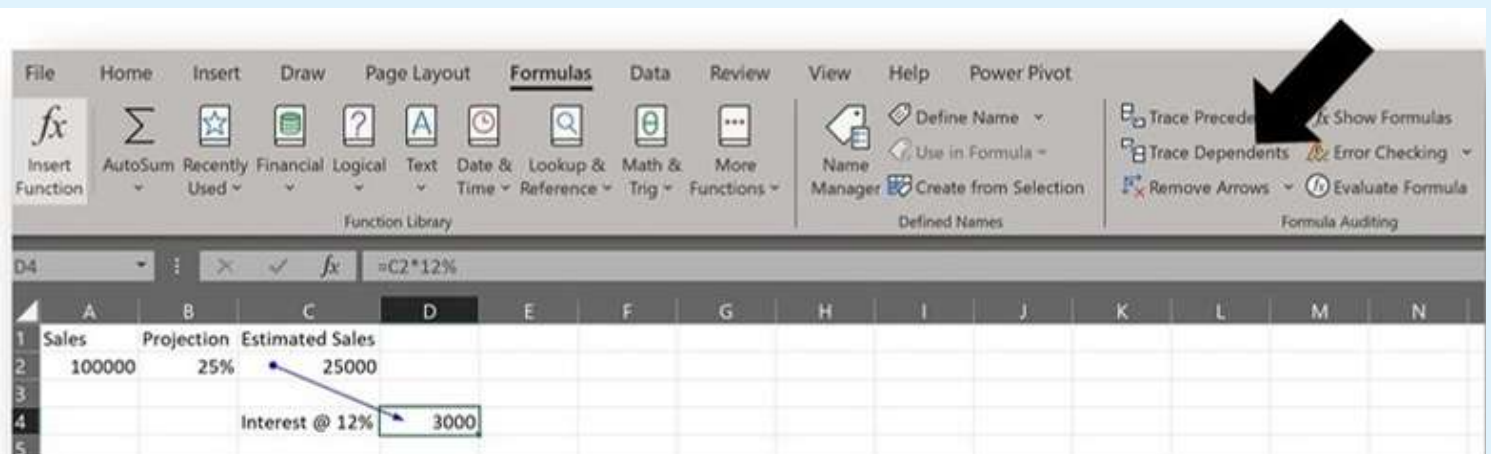


Select the formula Tab. Under Formula Auditing Group, click on the Trace Precedents option.

The precedent cells will be shown with blue dots.

2. Trace Dependents

Select the formula Tab. Under Formula Auditing Group, click on the Trace Dependents option



The dependent cells will be shown with blue dots.

Tracing precedents and dependents is crucial for understanding cell relationships. Precedents are cells that influence the active cell's value, while dependents are cells affected by the active cell.

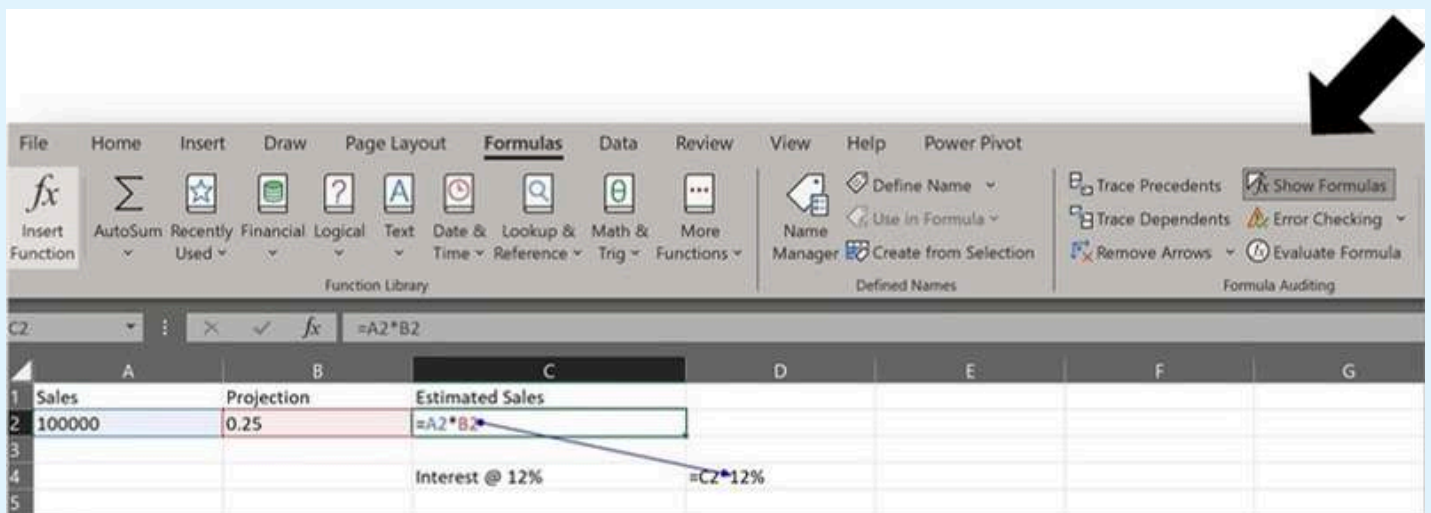
3. Remove Arrows

After tracing precedents and dependents, users can remove the arrows by selecting "Remove Arrows" in the Formula Auditing group. This option clears the visual indicators, maintaining a clutter-free spreadsheet.



4. Show Formulas

The "Show Formulas" option displays all formulas in the cells instead of their results. This view is beneficial for reviewing and verifying formulas quickly.

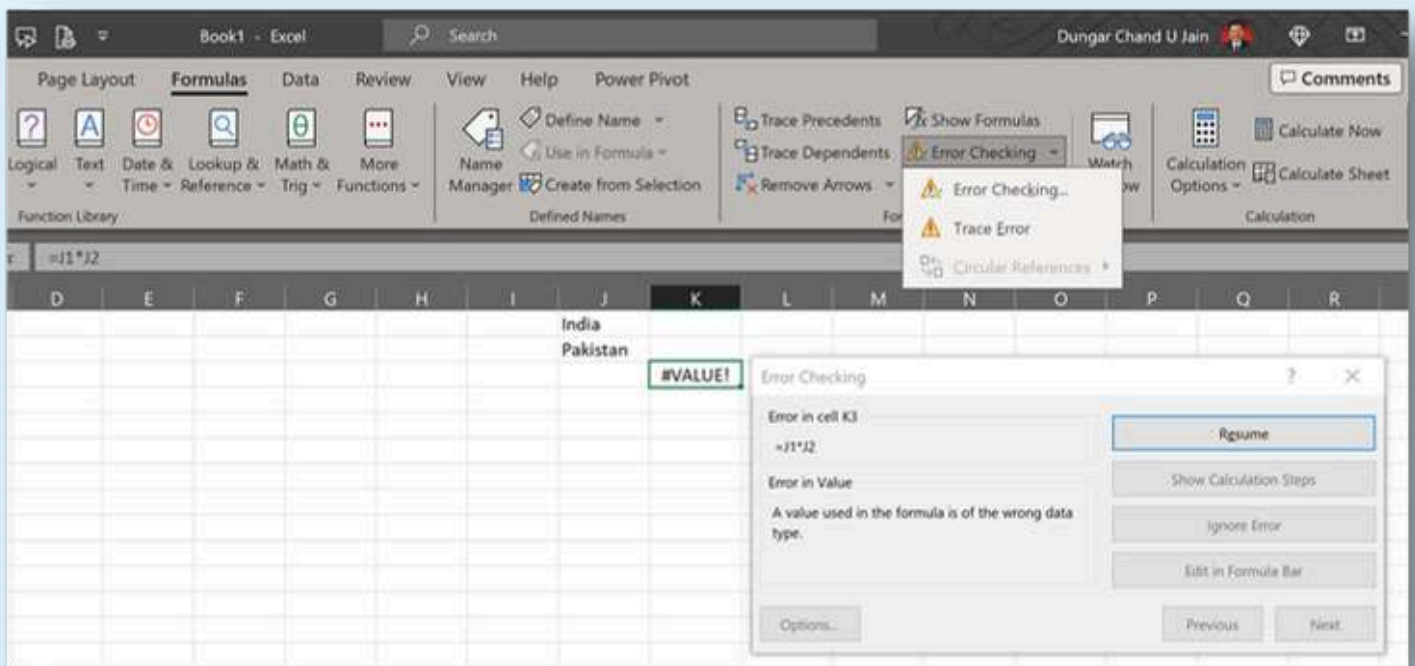


5. Error Checking

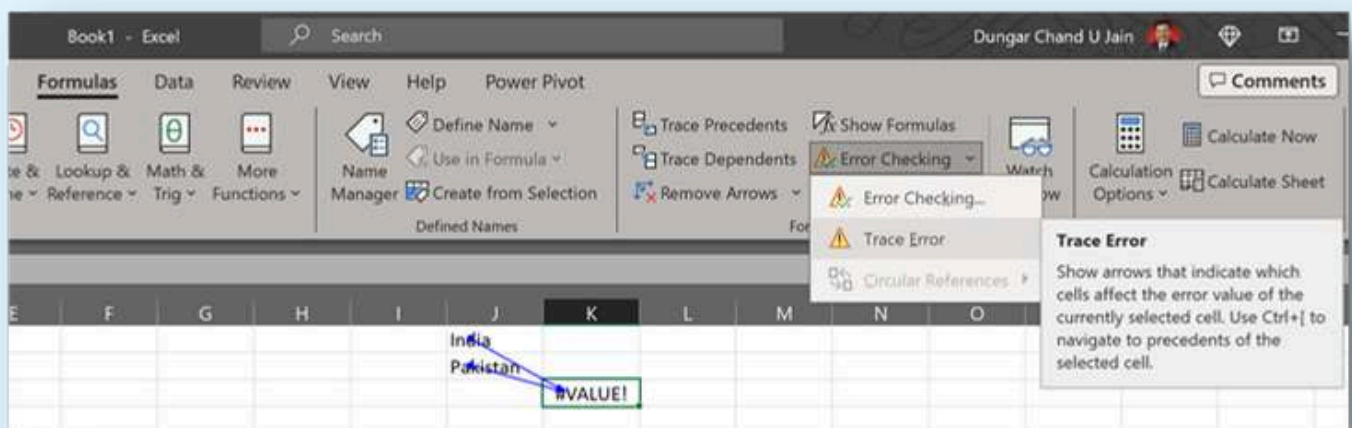
Error Checking is a fundamental aspect of Formula Auditing. Excel automatically flags potential errors in formulas with a small triangle in the cell's top-left corner. Clicking on the error icon reveals a dropdown menu with options to correct or ignore the error. Additionally, users can initiate a manual error check by selecting "Error Checking" in the Formula Auditing group.

Example:

Consider a cell with the formula =J1*J2. If cells J1 and J2 contain text instead of numbers, Excel will flag this as an error, allowing the user to rectify it promptly.



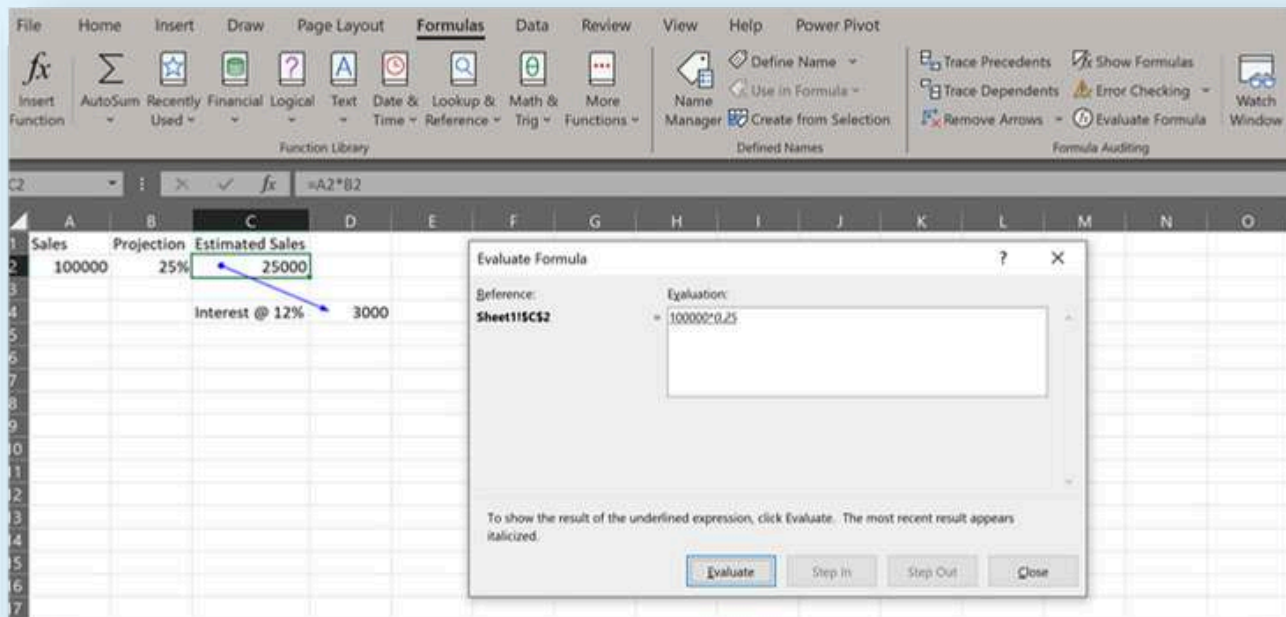
Trace Error



5. Evaluate Formula

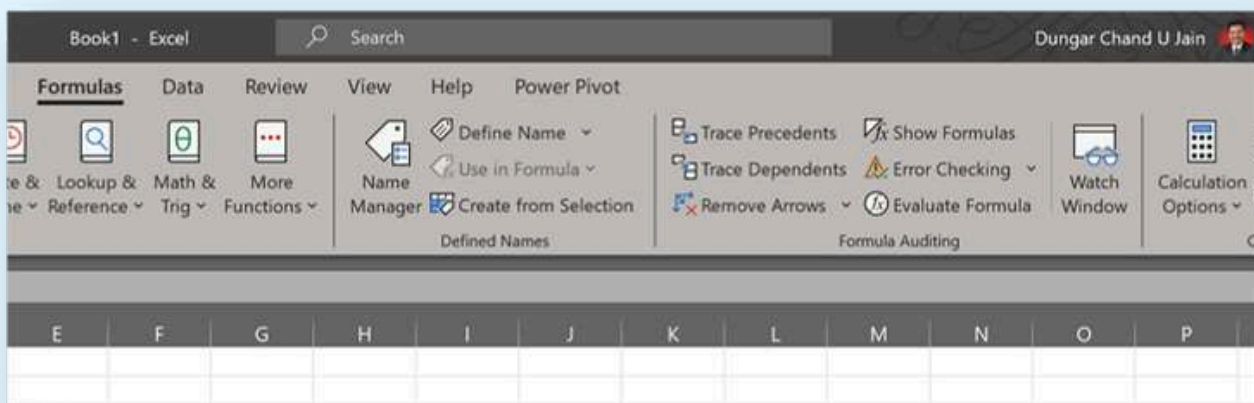
The "Evaluate Formula" tool allows users to step through a formula's calculation, observing how Excel evaluates each part of the formula. This step-by-step approach is particularly useful for debugging complex formulas.

Click Evaluate in the dialog box and Excel will take through the series of steps involved in a formula one-by-one and show how the result was obtained in the window.



6. Watch Window

The Watch Window is a floating dialog box that monitors the values and formulas of specified cells, even when the cells are not visible on the screen. This tool is especially useful for tracking crucial cells in large spreadsheets.



Example:

Adding cell D1, which contains the total sales figure, to the Watch Window allows users to monitor sales while working on different parts of the spreadsheet.

Conclusion:

Formula Auditing in MS Excel is an excellent feature for users seeking to optimise the accuracy and reliability of their spreadsheets. By taking benefits of techniques such as Error Checking, Trace Precedents, Trace Dependents, Show Formulas, Evaluate Formula, and Watch Window, one can effectively audit, debug, and monitor formulas, thereby enhancing the data analysis.

UPCOMING EVENTS JULY 2024



CA DAY



The Institute of Chartered Accountants of India
(Setup by an Act of Parliament)

Madurai Branch (SIRC)

Jointly with

Rotary Club of Madurai - RI Dist 3000

CA DAY - July 1



**Serving Breakfast to Inmates of
Madurai Sevashram @ 7:00 AM**



**Tree plantation at Madurai
Sevashram @ 8:00 AM**



**Madurai Sevashram
Next to Rotary Hall,
Visalakshipuram**



**Flag Hoisting at
ICAI Bhawan @
9:00 AM**



**Blood Donation Camp at
ICAI Bhawan @ 10:00 AM**



**Members & Family Get Together
at ICAI Bhawan @ 06:00 PM**

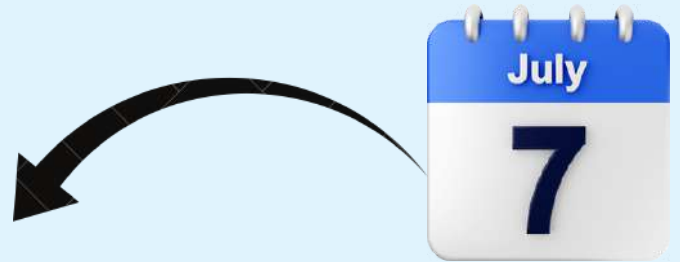


DATE: 06/07/2024

2 Hours

CA. SELVAKUMAR M

**DEEP DIVE INTO GST RECENT CIRCULARS
AND THE 53RD COUNCIL RECOMMENDATIONS**



DATE: 07/07/2024

**MSME YATRA VISIT AT BRANCH
FINANCE AND TAX LITERACY - EMINENET**



**ANNUAL GENERAL MEETING
OF BRANCH @ 10.00 AM**



DATE: 13/07/2024

CA. NATANAGOPAL S

**TRICKY ISSUES IN ITR FILINGS:
AY 2024-25**

2 Hours

COMPLIANCE CALENDER

Event Date	As per Act	Applicable Form	Obligation
Jul/2024	LLP Act	LLP Form 4D	Extended date for filing return when an LLP receives a declaration of beneficial interest from registered partner in Form 4B or beneficial partner in Form 4C and records the same in the register of partners.
Jul/2024	LLP Act	LLP BEN 2	Extended date for filing form for declarations received from Individuals meeting the criteria for Significant Beneficial Ownership in Form No. LLP BEN-1.
Jul/2024	Income Tax	Challan No. ITNS-281	"Payment of TDS/TCS of June. In case of government offices where TDS/TCS is paid by book entry, same shall be paid on the same day on which tax is deducted or collected."
Jul/2024	FEMA	ECB-2	Return of External Commercial Borrowings for June.
Jul/2024	Goods and Services Tax	GSTR-7	Monthly Return by Tax Deductors for June.
Jul/2024	Goods and Services Tax	GSTR-8	Monthly Return by e-commerce operators for June.
Jul/2024	Goods and Services Tax	GSTR-1	Monthly Return of Outward Supplies for June.
Jul/2024	Goods and Services Tax	GSTR-1	Quarterly return of Outward Supplies for Apr-Jun (QRMP)
Jul/2024	Goods and Services Tax	GSTR-5	Monthly Return by Non-resident taxable person for June.
Jul/2024	Goods and Services Tax	GSTR-6	Monthly Return of Input Service Distributor for June.
Jul/2024	Provident Fund	Electronic Challan cum Return (ECR)	E-Payment of PF for June.

Event Date	As per Act	Applicable Form	Obligation
Jul/2024	ESI	ESI Challan	Payment of ESI for June
Jul/2024	Income Tax	Form 24G	Details of Deposit of TDS/TCS of June by book entry by an office of the Government.
Jul/2024	Income Tax	Form 27EQ	TCS statements for April-June.
Jul/2024	Income Tax	Form No.15CC	Statement by Banks etc. in respect of foreign remittances during April-June.
Jul/2024	Income Tax	Form No.15G/H	E-filing of form 15G/H for April-June.
Jul/2024	Income Tax	Form 16B	Issue of TDS Certificate for tax deducted u/s 194-IA on payment made for purchase of property in May.
Jul/2024	Income Tax	Form 16C	Issue of TDS Certificate for tax deducted on rent above 50,000 p.m by certain individuals/HUF under Section 194-IB where lease has terminated in May.
Jul/2024	Income Tax	Form 16D	Issue of TDS Certificate for tax deducted u/s 194M on certain payments by individual/HUF in May.
Jul/2024	Income Tax	Form 16E	Issue of TDS Certificate for tax deducted u/s 194S on Virtual Digital Assets in May.
Jul/2024	FEMA	FLA	Annual Return of Foreign Assets & Liabilities for FY 23-24.
Jul/2024	Delhi Labour Welfare Fund	Form A	Contribution from Jan-Jun. Amount = No of employee as on 30 June X Rs 3. Online payment to be made at https://dlabourwelfareboard.delhi.gov.in after registration at this portal. Prior registration under Delhi Shops & Establishments Act is required at https://labourcis.nic.in

Event Date	As per Act	Applicable Form	Obligation
Jul/2024	RBI Act		RBI Annual Return by Companies having Foreign Investment received or Foreign Investment made abroad during FY 23-24.
Jul/2024	Goods and Services Tax	CMP-08	Payment of tax under Composition Scheme for June quarter.
Jul/2024	Goods and Services Tax	GSTR-3B	Summary Return cum Payment of Tax for June by Monthly filers. (other than QRMP).
Jul/2024	Goods and Services Tax	GSTR-5A	Monthly Return by persons outside India providing online information and data base access or retrieval services, for June.
Jul/2024	Goods and Services Tax	GSTR-3B	Summary Return of April-June quarter by Quarterly filers in Chhattisgarh, Madhya Pradesh, Gujarat, Maharashtra, Karnataka, Goa, Kerala, Tamil Nadu, Telangana, Andhra Pradesh, the Union territories of Daman and Diu and Dadra and Nagar Haveli, Puducherry, Andaman and Nicobar Islands or Lakshadweep.
Jul/2024	Goods and Services Tax	GSTR-3B	Summary Return of April-June quarter by Quarterly filers in Himachal Pradesh, Punjab, Uttarakhand, Haryana, Rajasthan, Uttar Pradesh, Bihar, Sikkim, Arunachal Pradesh, Nagaland, Manipur, Mizoram, Tripura, Meghalaya, Assam, West Bengal, Jharkhand or Odisha, the Union territories of Jammu and Kashmir, Ladakh, Chandigarh or Delhi.
Jul/2024	Goods and Services Tax	GSTR-11	Return for June by persons with Unique Identification Number (UIN) like embassies etc to get refund under GST for goods and services purchased by them.
Jul/2024	Income Tax	Form 27D	Issue of TCS certificate for April-June by All Collectors.
Jul/2024	Income Tax	Form 26QB	Deposit of TDS u/s 194-IA on payment made for purchase of property in June.

Event Date	As per Act	Applicable Form	Obligation
Jul/2024	Income Tax	Form 26QC	Deposit of TDS u/s 194-IB @ 5% on total payment of Rent more than 50,000 pm by individual or HUF (not liable to tax audit) during FY 24-25, where lease has terminated in June. (Else TDS is to be deposited on annual basis by 30 April of next year.)
Jul/2024	Income Tax	Form 26QD	Deposit of TDS on certain payments made by individual/HUF u/s 194M for June.
Jul/2024	Income Tax	Form 26QE	Deposit of TDS on Virtual Digital Assets u/s 194S for June.
Jul/2024	Income Tax	Form 24QF	Statement of tax deposited to be furnished by an exchange in relation to transfer of virtual digital asset u/s 194S for April-June.
Jul/2024	Income Tax	Form 24Q, 26Q & 27Q	Quarterly TDS Statements for April-June.
Jul/2024	Income Tax	Form 67	Statement of foreign income in FY 23-24 & tax deducted or paid on such income to claim foreign tax credit. Applicable where due date of ITR is 31 July.
Jul/2024	Income Tax	Forms 1 to 7	ITRS for Individuals, Non Corporates not-liaable to Audit, for AY 2024-25.
Jul/2024	Income Tax	Form 9A	Upload option to apply income of previous year for future application by Trusts. Applicable where due date of ITR is 31 Jul.
Jul/2024	Income Tax	Form 10	Statement to accumulate income for future application u/s 10(21) or 11(1) by Trusts. Applicable where due date of ITR is 31 Jul.
Jul/2024	GST	-	Taxpayers with Turnover below Rs 5 Crores can opt in or opt out of QRMP Scheme for Jul-Sep quarter.
Jul/2024	Income Tax	26QAA	Return of non-deduction at source by banks from interest on time deposit for April-June.



MADURAI BRANCH(SIRC)

ICAI Bhawan, Old Natham Road, Opp. Balamandiram School,
Visalakshipuram, Madurai-625 014

Phone - +91 82201 11968

+0452-2640968

+0452-4220968

Email - madurai@icai.org

Managing Committee

CA.Jayakrithika R	Chairman
CA.Chairman R	Vice chairman and Secretary
CA.Sathish Kumar P.S	Treasurer and SICASA Chairman
CA.Ravindran S.S	Editor
CA.Hanumanthan R	Immediate Past Chairman
CA.Manimegalai T	Past Chairman

Editorial Board

CA.Jayakrithika R	Chairperson
CA.Ravindran S.S	Editor
CA.Venkatalakshmi V	Member
CA.Fathima	Member

Special Thanks

CA Dungar Chand U Jain	Past Chairman(SIRC)
CA Vimala V	Member

Disclaimer - The Madurai Branch of SIRC of ICAI do not accept any responsibility for any views expressed in different Contribution/advertisement published in the newsletter. Authors do not accept any responsibility in any manner since the article published in the newsletter is informative purpose only